



Using "Genuine Laars" parts will ensure accurate replacement and warranty coverage. Installation and Operation Manuals for current products are available on-line at www.Laars.com

Our Commitment

We believe the availability of factory authorized replacement parts is an essential component of customer service. We strive to provide every opportunity for our customers to order and stock factory authorized replacement parts, including special incentive, pricing and freight programs. Contact your Laars representative or sales manager for more details.

Ordering

Laars sells parts only through its normal distribution channels. The most commonly used parts are listed in this parts guide, and can be ordered through Laars stocking representatives or wholesalers. Call the Service Department for assistance in identifying parts not listed. Have the model and serial number of the unit before calling to assure accurate parts identification. Rush Orders: We make every effort to ship rush orders the same day at our regular prices, but cannot guarantee same day shipment. Express freight charged by carriers is not refundable regardless of ship date; please indicate alternate shipping choice if order cannot ship the same day. Some parts are subject to price changes and limited availability. Laars representatives or wholesalers should call the factory for price and lead time for non-current sheet metal parts, parts listed as "limited to stock on hand" and parts not listed in this document.

Terms and Conditions

1. Standard terms will apply to all parts orders.
2. Special pricing is available for bulk quantity orders. Contact the Customer Service Department for pricing and specifics.
3. Expedite fee for non-stocked heat exchangers, 24 hour turnaround \$250.00 net.
4. Expedite fee for non-stocked sheet metal parts (7 working days) is \$250.00 per part.
5. Cancellation fee for custom product already in production: \$250
6. All parts are shipped FOB warehouse.
7. Any excise or sales tax will be charged to and paid by the buyer. Buyer is solely responsible for providing valid resale certificates.

Salable Returns / Unused Parts

Parts in new condition with all original packaging will be considered for return within one year of date of purchase from Laars, subject to a 25% restocking charge *and* recovery of other discounts or incentives earned at time of purchase. Invoice number and date of purchase must be furnished. Refunds will be made to the original purchaser only, and will be made at the sole discretion of Laars. Return of parts may affect eligibility for other programs. Contact your Laars representative for more information.

Parts Limited Warranty

Laars warrants all parts to be free from defects in materials and workmanship to the original retail purchaser for one year from date of retail purchase. Proof of purchase is required. This limited warranty applies only to parts purchased for use as an original equipment replacement part in Laars Heating Systems boilers and water heaters. At its option, Laars will repair or replace any part that fails under this limited warranty. Repair or replacement shall be the sole remedy, and Laars shall not be liable for any field labor, removal, transportation to/from the factory, reinstallation or any other such costs.

Return Under Warranty

Parts should be returned to the place of purchase for warranty evaluation. If the original place of purchase is not known, contact your Laars wholesaler, factory representative or Contract Service Center. Wholesalers, factory representatives and Contract Service Centers returning parts for warranty consideration must obtain a RMA (Return Merchandise Authorization) number from the Customer Service Department. Each part must be tagged with the original purchase date, model and serial number of the boiler it was installed on, and a description of the failure. Parts must be returned freight prepaid and clearly marked with the RMA number. The RMA expires if not returned within 60 days of issuance. Contact your Laars representative or the Customer Service Department for more information on obtaining warranty coverage on large, heavy or bulky items.

Laars Heating Systems maintains a policy of continuous quality improvement.

Laars Heating Systems Company reserves the right to change specifications, components, features, or to discontinue products without notice. While Laars will make every reasonable effort to provide advance notice of changes, supplier actions, changes in code requirements, and Laars' efforts to continuously upgrade products will sometimes require that changes be introduced with minimal or no advance notice.

9.2 Parts List

ITEM DESCRIPTION	SIZE 80	SIZE 105	SIZE 150	SIZE 210	SIZE 285	SIZE 399	SIZE 500	SIZE 700	SIZE 750	SIZE 850
Jacket Components – See Figure 27										
1 Front Panel Assembly	R50D3200	R50D3200	R50D3200	R50D3200	R50D3200	R50D3200	R50D3200	R60D3200	R60D3200	R60D3200
2 Front Panel Handle	R50D3204	R50D3204	R50D3204	R50D3204	R50D3204	R50D3204	R50D3204	R50D3204	R50D3204	R50D3204
3 Rear Panel	R50D3101	R50D3101	R50D3101	R50D3101	R50D3101	R50D3101	R50D3101	R50D3101	R50D3101	R50D3101
4 Left Side Panel	R8D3002	R10D3002	R15D3002	R20D3002	R30D3002	R40D3002	R50D3002	R50D3002	R75D3002	R85D3002
5 Right Side Panel	R15D3001	R15D3001	R15D3001	R30D3001	R30D3001	R40D3001	R50D3001	R50D3001	R75D3001	R85D3001
6 Left Top Panel	R8D3303	R10D3303	R15D3303	R21D3303	R30D3303	R40D3303	R50D3303	R60D3303	R75D3303	R85D3303
7 Middle Top Panel	R8D3302	R10D3302	R15D3302	R21D3302	R30D3302	R40D3302	R50D3302	R60D3302	R75D3302	R85D3302
8 Right Top Panel	R8D3301	R10D3301	R15D3301	R21D3301	R30D3301	R40D3301	R50D3301	R60D3301	R75D3301	R85D3301
Rear Top Panel							—	—	R75D3304	R85D3304
9 Jacket Angle Support	R8D3102 (RH)	R15D3102	R15D3102	R30D3102	R30D3102	R40D3102	R50D3102	R50D3102	R75D3102	R85D3102
	R15D3102 (LH)	(2)	(2)	(2)	(2)	(2)	(2)	(2)	(2)	(2)
10 Jacket Support, Left Stanchion	R50D3003	R50D3003	R50D3003	R50D3003	R50D3003	R50D3003	R50D3003	R50D3003	R50D3003	R50D3003
11 Jacket Support, Right Stanchion	R50D3004	R50D3004	R50D3004	R50D3004	R50D3004	R50D3004	R50D3004	R50D3004	R50D3004	R50D3004
12 Front Bezel	R50D7101	R50D7101	R50D7101	R50D7101	R50D7101	R50D7101	R50D7101	R50D7101	R50D7101	R50D7101
Internal Components – See Figure 28										
20 Base Assembly	R15D1100	R15D1100	R15D1100	R30D1100	R30D1100	R40D1100	R50D1100	R60D1100	R75D1100	R85D1100
21 Left Rear Support Stanchion	R50D1001	R50D1001	R50D1001	R50D1001	R50D1001	R50D1001	R50D1001	R50D1001	R50D1001	R50D1001
22 Left Front/Right Rear Support Stanchion	R50D1002	R50D1002	R50D1002	R50D1002	R50D1002	R50D1002	R50D1002	R50D1002	R50D1002	R50D1002
					(2)	(2)	(2)	(2)	(2)	(2)
23 Cantilevered Base Stanchion	R15D1002	R15D1002	R15D1002	R40D1001	R40D1001	R40D1001	R50D1003	R50D1003	75D1002	75D1002
24 Front/Rear Stanchion Brace	R50D1005	R50D1005	R20D1006	R20D1006	R50D1005	R50D1005	R50D1005	R50D1005	R85D1005	R85D1005
							(2)	(1)	(2)	(2)
25 Mounting Rail	R15D1004	R15D1004	R15D1004	R30D1004	R30D1004	R30D1004	R50D1004	R50D1004	R75D1004	85D1004
				(2)	(2)	(2)	(2)	(2)	(2)	(2)
26A Diagonal Brace							—	—	75D1006	75D1006
									(2)	(2)
27 Condensate Trap Assy	R20D4020	R20D4020	R20D4020	R20D4020	R50D4020	R50D4020	R50D4020	RA2116300	RA2116300	RA2116300
28 Heat Exch. Rail Clip	R50D1006	R50D1006	R50D1006	R50D1006	R50D1006	R50D1006	R50D1006	R50D1006	—	—
	(4)	(4)	(4)	(4)	(4)	(4)	(4)	(4)		
30 PVC Reducer	—	—	RP2053000	RP2053000	RP2052900	RP2052800	RP2052800	RP2052800	RP2052800	RP2052800

ITEM DESCRIPTION	SIZE 80	SIZE 105	SIZE 150	SIZE 210	SIZE 285	SIZE 399	SIZE 500	SIZE 700	SIZE 750	SIZE 850
30a CPVC Reducer or Coupling	RD2010501	RD2010501	RP2065600	RP2065600	—	—	—	—	—	—
30b 2" Pipe CPVC	RD2010212	RD2010212	RD2010213	RD2010213	—	—	—	—	—	—
31 Hose Barb Adapter	RP2067100	RP2067100	RP2056100	RP2056100	RP2056100	RP206700	—	—	—	—
32 Stanchion Brace	R40D1005	R40D1005	R40D1005	R40D1005	R40D1005	R40D1005	—	—	—	—
33 Air Inlet/Exhaust Bracket	R8D3005	R10D3005	R20D3120	R20D3120	R30D3005	R50D3005	R50D3005	R85D3005	R85D3005	R85D3005
Gas Train Components – See Figure 29										
40 Combustion Air Blower	RA2113700	RA2113700	RA2107500	RA2114200	RA2114200	RA2113100	RA2113100	RA2108500	RA2108500	RA21085
41 Gas Valve/Venturi	RV2017900	RV2017901	RV2017902	RV2017903	RV2017904	—	—	—	—	—
42 Gas Valve	—	—	—	—	—	RV2019200	RV2017800	RV2019700	RV2019700	RV2019100
43 Gas/Air Venturi	—	—	—	—	—	—	RA2113200	RA2115000	RA2115000	RA2116200
44 Manual Gas Valve	—	—	—	—	—	RV2000200	RV2003000	RV2003000 (2)	RV2003200	RV2003200
44A Manual Gas Valve	—	—	—	—	—	—	—	—	RV2003100	RV2003100
45 Gas Valve Flange Kit	—	—	—	—	—	—	RP2050100	RP2050100	RP2050100	RP2050100
46 Gas Valve/Venturi Cork Gasket	—	—	—	—	—	—	RS2104900	RS2104900	RS2104900	RS2104900
47 Gas Valve O-Ring	R30-227	R30-227	R30-227	R30-227	R30-227	—	—	—	—	—
48 Venturi O-Ring	—	—	—	—	—	RS2105200	RS2105200	RS2105200	RS2105200	RS2105200
49 High Gas Pressure Switch	—	—	—	—	—	—	(2)	(2)	(2)	(2)
50 Low Gas Pressure Switch	—	—	—	—	—	—	R2004000	R50D5013	R75D5014	R75D5014
51 Venturi / Duct Transition	R10D5013	R10D5013	R10D5013	R30D5013	—	—	R2004100	R50D5012	R75D5015	R75D5015
52 Gas Supply Pipe	RP2051700	RP2051400	RP2051400	RP2051400	RP2051500	—	R10501001	R10501001	R10501001	R10501001
53 Gas Pipe 3/4" NPT Formed Nipple	—	—	—	—	—	RP2056500	—	—	—	—
54 Air Connector Plate	—	—	—	—	—	—	R50D5021	R50D5021	R50D5021	R50D5021
55 Air Inlet Flex Hose	RD0091101	RD0091101	RD0091101	RD0091101	RD0091101	RD0091201	RD0090901	RD0091201	RD0091201	RD0091201
56 Air Inlet Collector	—	—	—	—	—	RV2019400	—	—	—	—
57 Electrical Connector with Cable	—	—	—	—	—	RE2331700	RE2331700	—	—	—
58 Elbow Adapter	—	—	—	—	—	RV2019300	RV2019300	—	—	—
59 Blower Adapter Plate with Gasket & Fasteners	—	—	—	—	—	RA2115400	RA2116400	RA2116400	—	—
59A Blower Gasket & Fasteners	—	—	—	—	—	—	—	—	—	—
60 Heat Exchanger	RS2106900	RS2105500	RS2105800	RS2105700	RS2105600	RS2105900	RS2105300	RS2111301	RS2111400	RS211500
61 Pump Assembly	RA2112232	RA2112227	RA2112227	RA2112228	RA2112230	RA2112231	RA2112229	—	—	—

ITEM DESCRIPTION	SIZE 80	SIZE 105	SIZE 150	SIZE 210	SIZE 285	SIZE 399	SIZE 500	SIZE 700	SIZE 750	SIZE 850
62 Low Water Cutoff Switch	—	—	—	—	—	—	RE2076500	RE2076500	RE2076500	RE2076500
63 Water Temp Sensor	RE2320600	RE2320600	RE2320600	RE2320600	RE2320600	RE2320600	RE2320600	RE2320600	RE2320600	RE2320600
64 Duplex Water Temperature Sensor	RE2319900	RE2319900	RE2319900	RE2319900	RE2319900	RE2319900	RE2319900	RE2319900	RE2319900	RE2319900
65 Duplex Stack Temperature Sensor	RE2319700	RE2319700	RE2319700	RE2319700	RE2319800	RE2319800	RE2319800	RE2319800	RE2319800	RE2319800
66 Pressure Relief Valve	R51-182 (30 PSI)	R51-182 (30 PSI)	R51-182 (30 PSI)	R51-182 (30 PSI)	RA2113602 (75 PSI)	RA2113602 (75 PSI)	RA2113602 (75 PSI)	RA2113602 (75 PSI)	RA2113602 (75 PSI)	RA2113602 (75 PSI)
67 Air Vent	R70-216	R70-216	R70-216	R70-216	R70-216	R70-216	R1-592	R1-592	R1-592	R1-592
68 Burner Door w/Gaskets	RS2108300	RS2108300	RS2108300	RS2108300	RS2108300	RS2108300	RS2108300	RS2108300	RS2113200	RS2113200
68A Gaskets-only (burner door)	R2069400	R2069400	R2069400	R2069400	R2069400	R2069400	R2069400	R2069400	R2069400	R2069400
69 Burner Gasket	RS2108500	RS2108500	RS2108500	RS2108500	RS2108500	RS2108500	RS2108500	RS2109100	RS2113700	RS2113700
69A Gasket Set (burner, ignitor, sensor & door gaskets)	RS2109100	RS2109100	RS2109100	RS2109100	RS2109100	RS2109100	RS2109100	RS2109100	RS2113600	RS2113600
70 Front Refractory Tile	RT2109000	RT2109000	RT2109000	RT2109000	RT2109000	RT2109000	RT2109000	RT2109000	RT21105	RT21105
71 Rear Refractory Tile	R50D2021	R50D2021	R50D2021	R50D2021	R50D2021	R50D2021	R50D2021	R50D2021	R50D2021	R50D2021
72 Main Burner w/gasket	R2069101	R2069102	R2069103	R2069104	R2069105	R2069106	R2069106	R2069107	R2069108	R2069109
73 Flame Sensor w/gasket	R2069200	R2069200	R2069200	R2069200	R2069200	R2069200	R2069200	R2069200	R2069900	R2069900
74 Ignitor w/gasket	R2069300	R2069300	R2069300	R2069300	R2069300	R2069300	R2069300	R2069300	R2069800	R2069800
74A Ignitor Gasket	RW2013300	RW2013300	RW2013300	RW2013300	RW2013300	RW2013300	RW2013300	RW2013300	RW2013300	RW2013300
74B Screw, Ignitor/Flame Sensor	m4-.7X8mm	m4-.7X8mm	m4-.7X8mm	m4-.7X8mm	m4-.7X8mm	m4-.7X8mm	S2112700	S2112700	S2112700	S2112700
74C Flame/Sensor Gasket	RW2013400	RW2013400	RW2013400	RW2013400	RW2013400	RW2013400	RW2013400	RW2013400	RW2013400	RW2013400
75 Air/Gas Channel	RS2108400	RS2108600	RS2108600	RS2108700	RS2108700	RS2108700	RS2108800	RS2108800	RS2113300	RS2113300
75A Screw, Air/Gas Channel	RS2109400 (5)	RS2109400 (5)	RS2109400 (5)	RS2109400 (5)	RS2109400 (5)	RS2109400 (5)	RS2109400 (5)	RS2109400 (5)	RS2112900 (5)	RS2112900 (5)
76 Drain	R10-143	R10-143	R10-143	R10-143	R10-143	R10-143	R10-143	R10-143	R10-143	R10-143
77 Sight Glass	R50D2020	R50D2020	R50D2020	R50D2020	R50D2020	R50D2020	R50D2020	R50D2020	R50D2020	R50D2020
Electrical Components – See Figure 31										
80 Control Panel Enclosure	R50D7001	R50D7001	R50D7001	R50D7001	R50D7001	R50D7001	R50D7001	R50D7001	R50D7001	R50D7001
81 Transformer	RE2108700	RE2108700	RE2108700	RE2108700	RE2108700	RE2108700	RE2108700	RE2108700	RE2108700	RE2108700
82 High Voltage Shield	R50D7002	R50D7002	R50D7002	R50D7002	R50D7002	R50D7002	R50D7002	R50D7002	R50D7002	R50D7002
83 Top Panel Bracket	R50D7003	R50D7003	R50D7003	R50D7003	R50D7003	R50D7003	R50D7003	R50D7003	R50D7003	R50D7003
84 Electronic Control Module, Standard	Contact Customer Service at 800 900-9275 x1									

ITEM DESCRIPTION	SIZE_80	SIZE_105	SIZE_150	SIZE_210	SIZE_285	SIZE_399	SIZE_500	SIZE_700	SIZE_750	SIZE_850
84 Electronic Control Module, CSD-1	---	---	---	---	---	---	R50D7008	R50D7008	R50D7008	R50D7008
85 Rocker Switch	RE2322700	RE2322700	RE2322700	RE2322700	RE2322700	RE2322700	RE2322700	RE2322700	RE2322700	RE2322700
86 Control Display	RE2326600	RE2326600	RE2326600	RE2326600	RE2326600	RE2326600	RE2326600	RE2326600	RE2326600	RE2326600
87 Wire Harness	R50D7407	R50D7407	R50D7407	R50D7407	R50D7407	R50D7405	R50D7401	R50D7410	R50D7409	R50D7409
88 CSD-1 Wire Harness	---	---	---	---	---	---	R50D7403	R50D7411	R50D7409	R50D7409

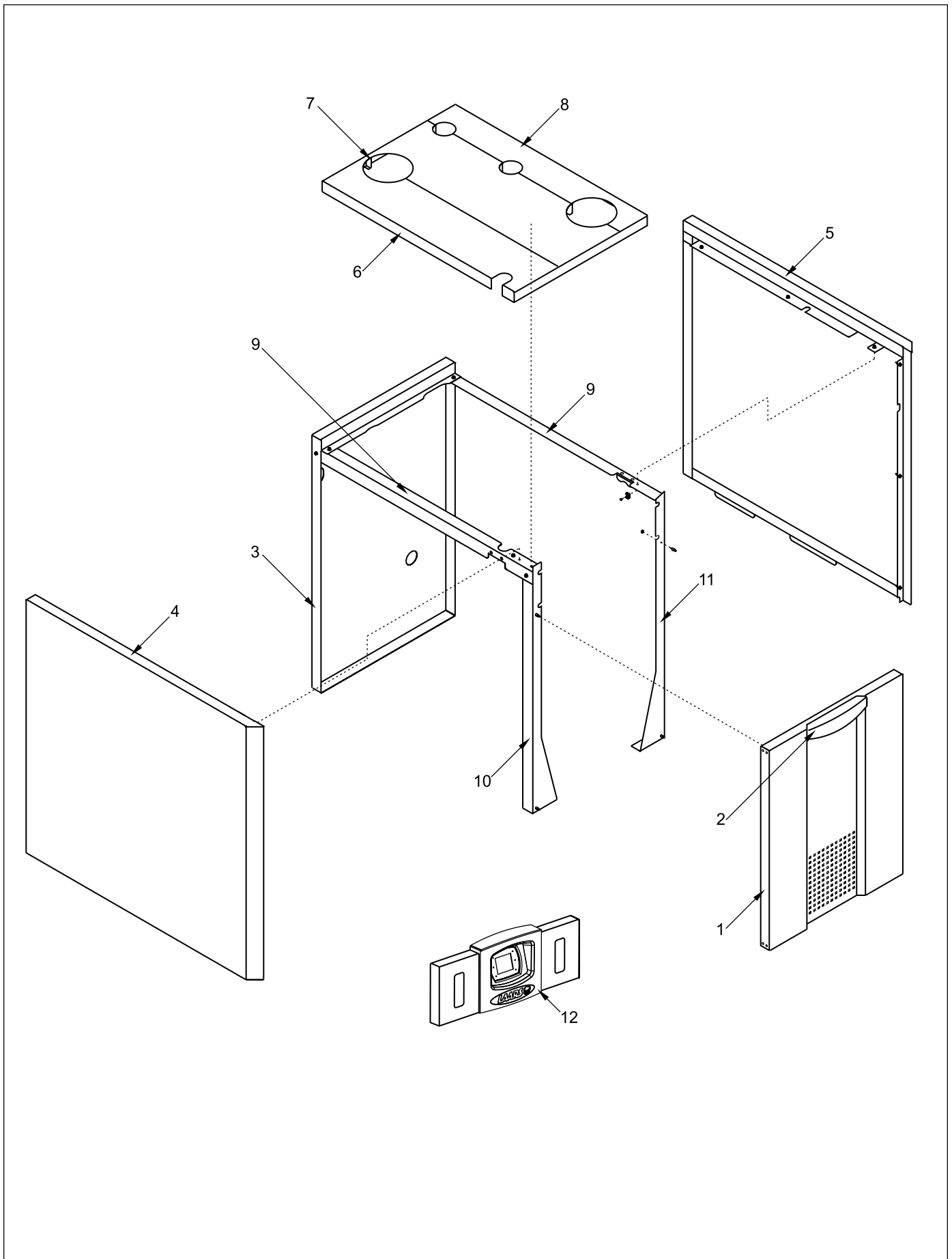


Figure 27. Jacket Components.

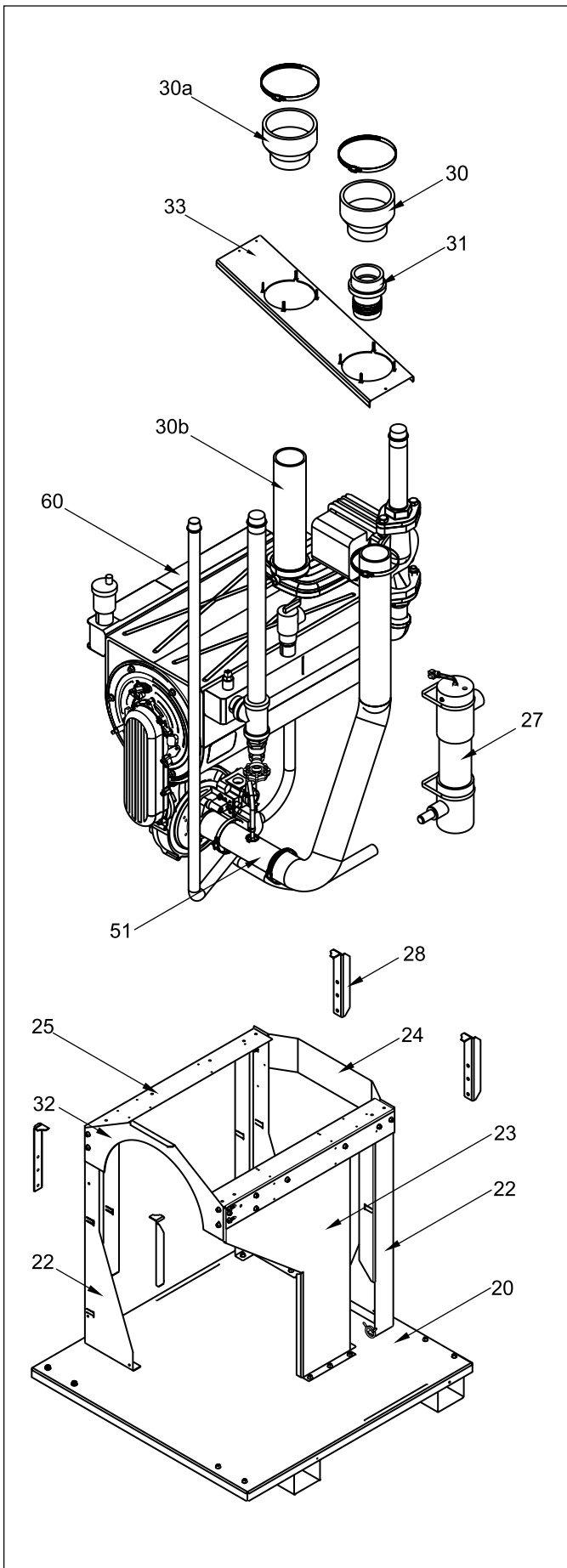


Figure 28A. Internal Components, sizes 80-210.

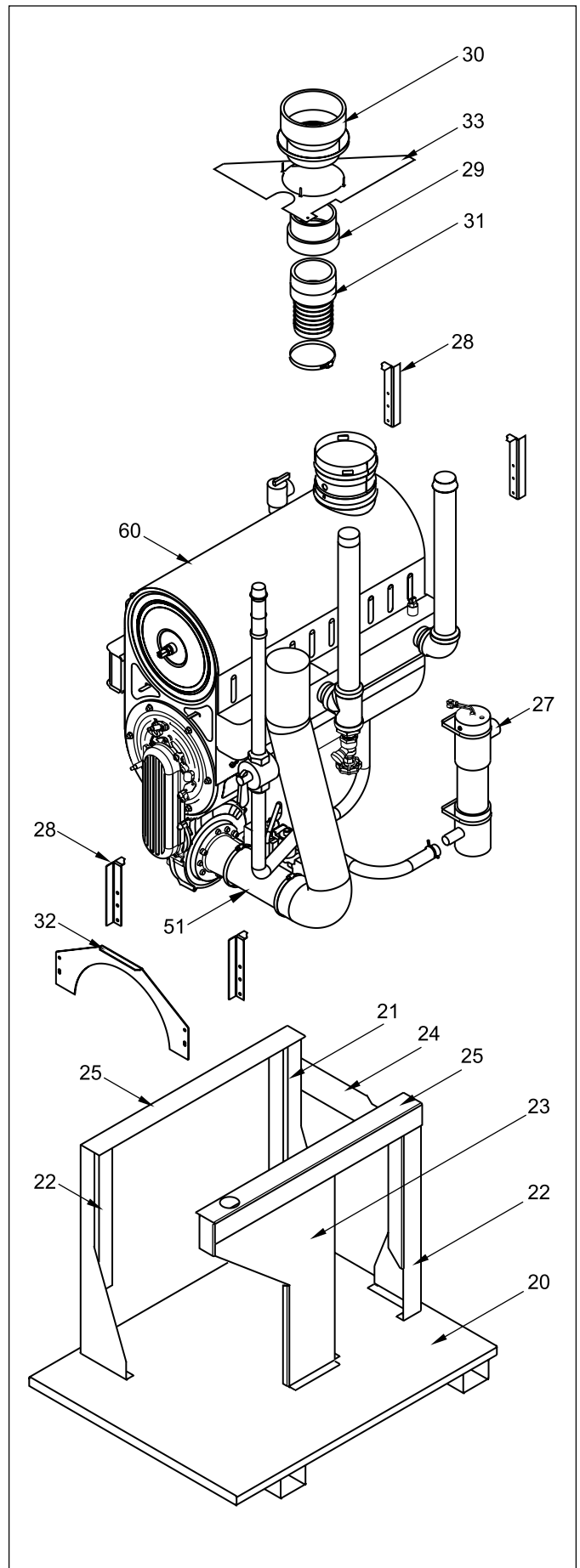


Figure 28B. Internal Components, sizes 285-850.

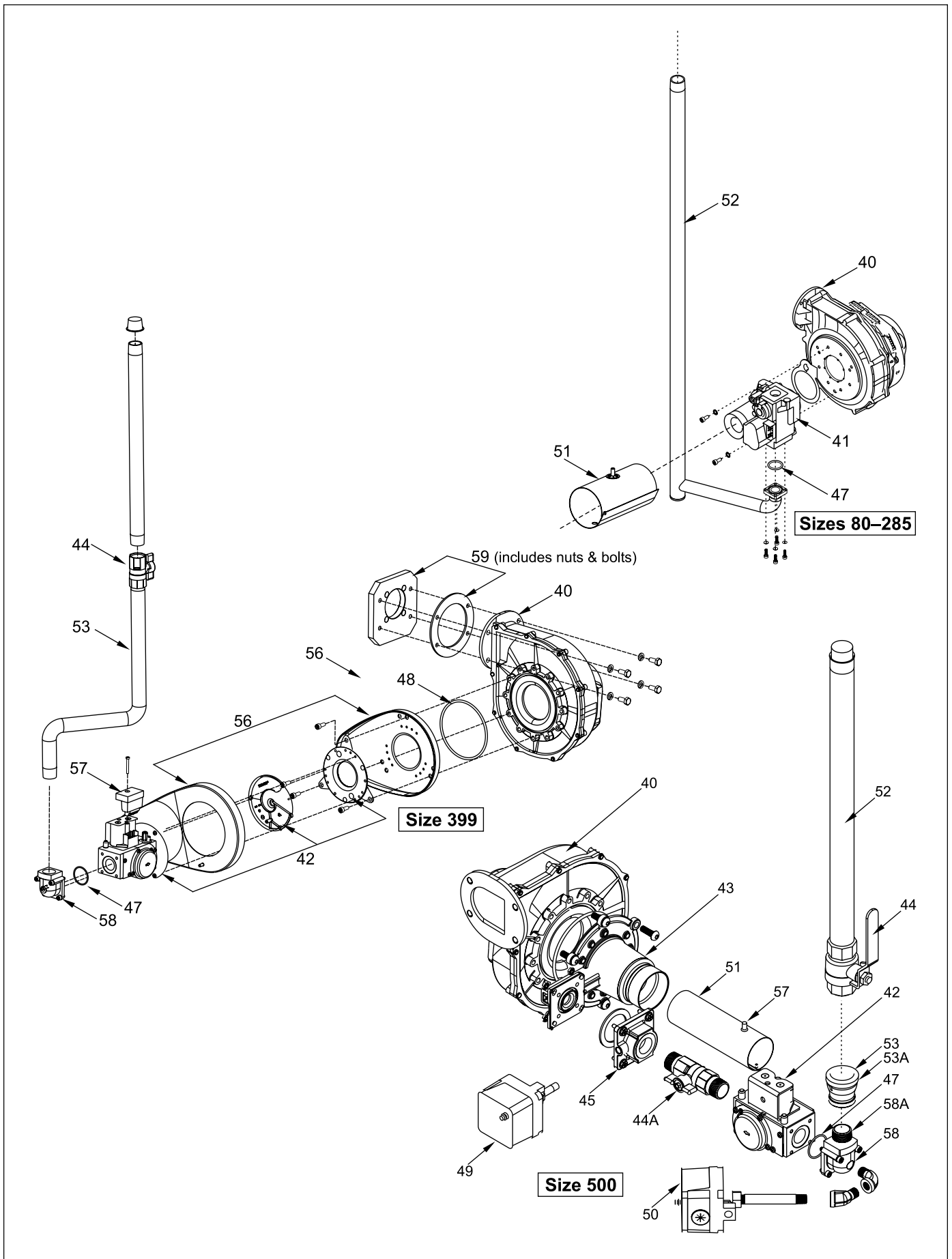


Figure 29A. Gas Train Components (80-500).

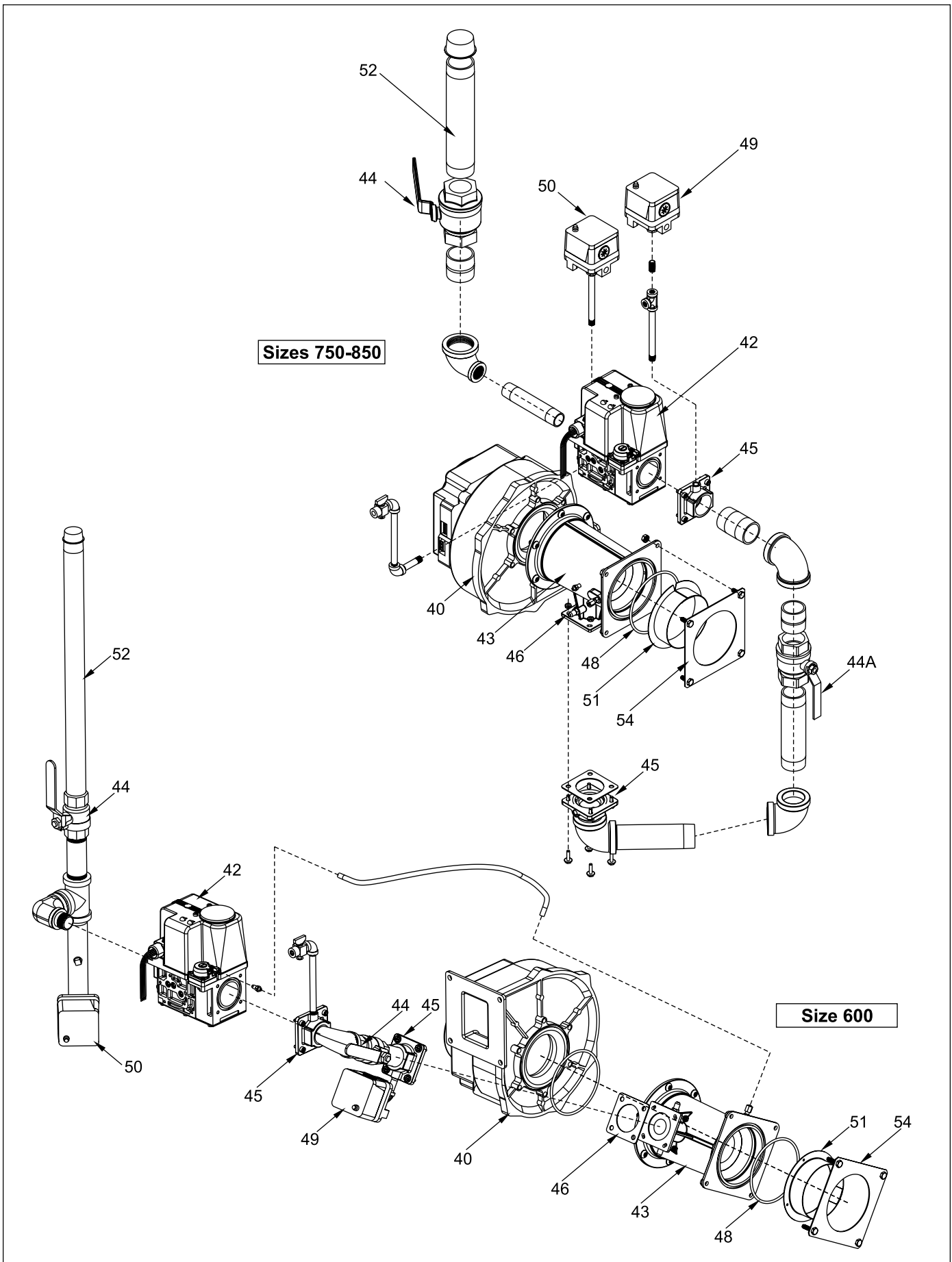


Figure 29B. Gas Train Components (600-850).

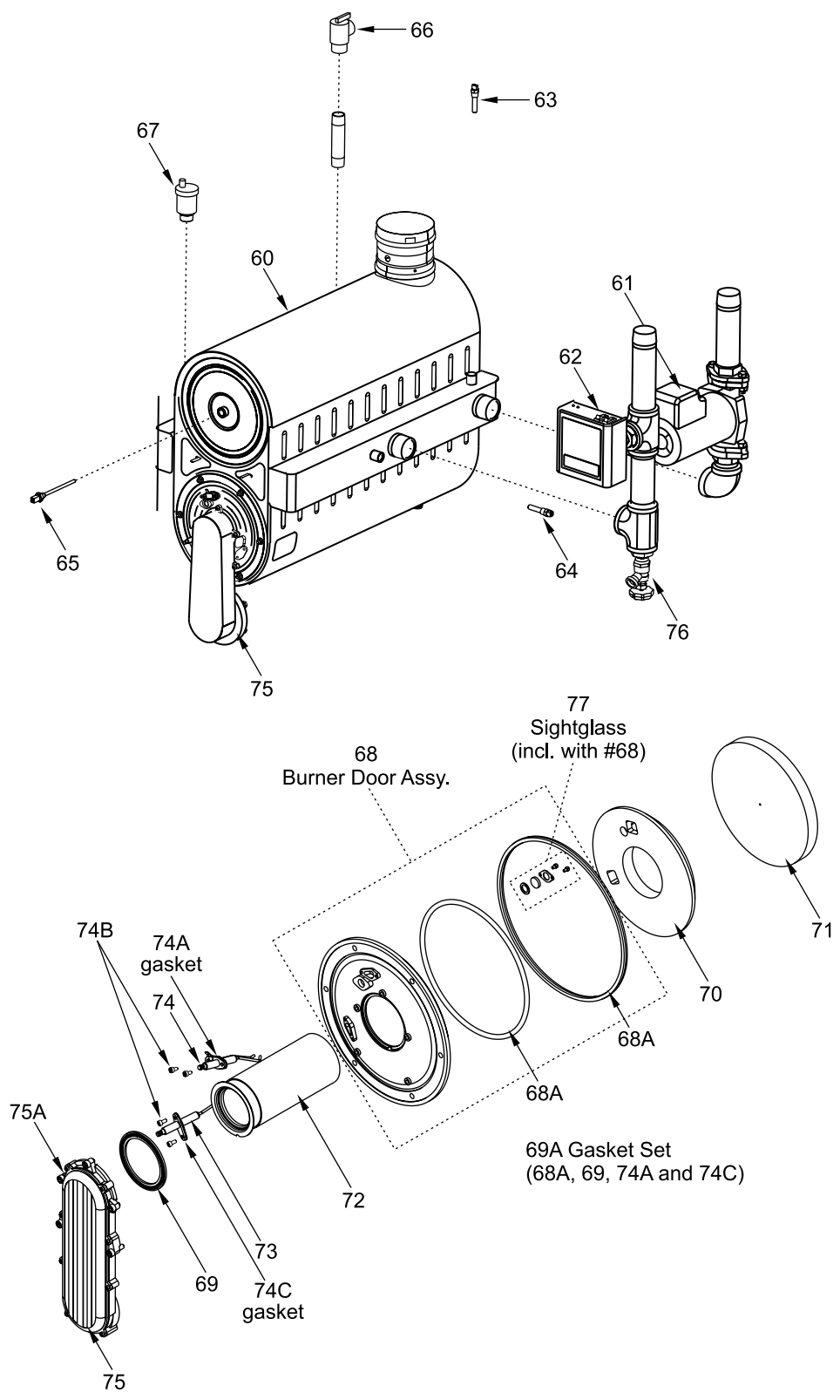


Figure 30. Heat Exchanger Components.

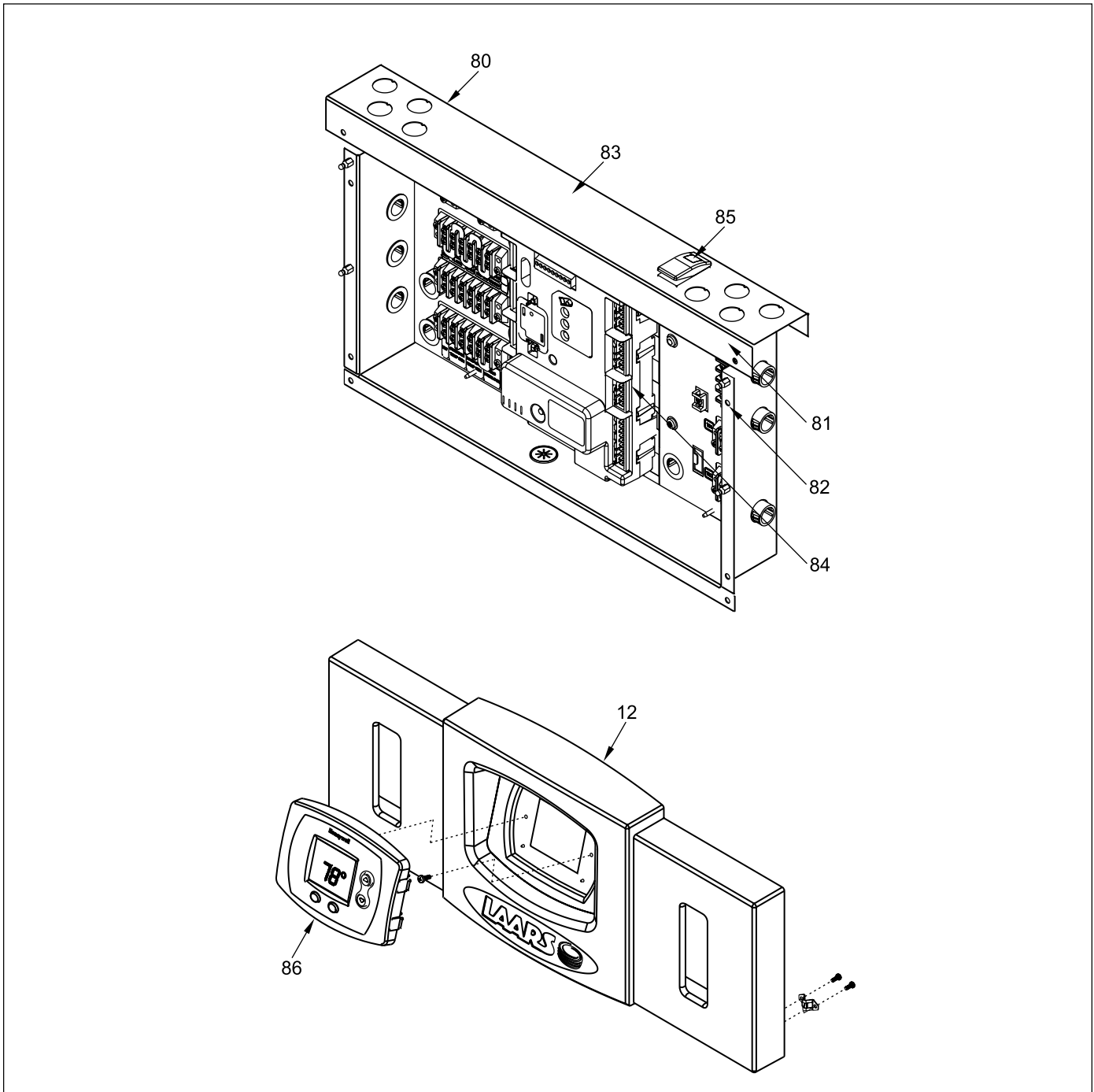


Figure 31 Electrical Components.



H2335500-